

Valli.

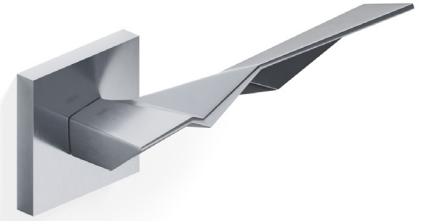
handle creators

H 356

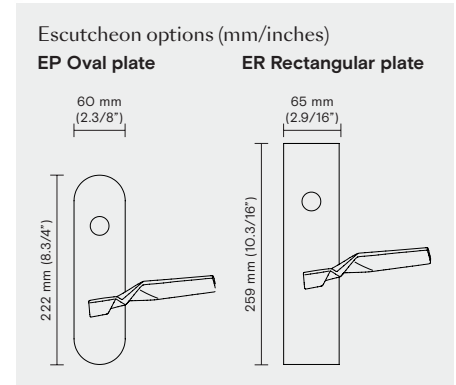
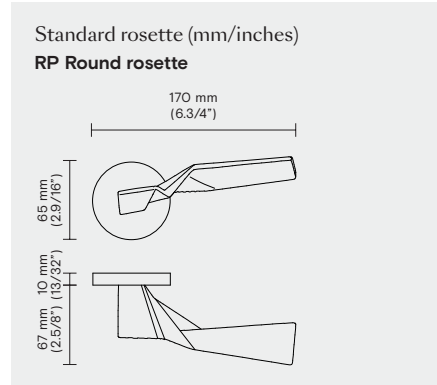
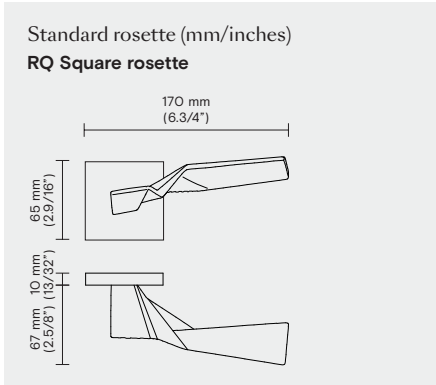
Zaha Hadid

Material
Zinc alloy

Collection
Fusital



Trim options



Conversions from metric to U.S. measurements are approximate.

Suggested finishes

22M Matt white



26 Polished chrome



26D Satin chrome



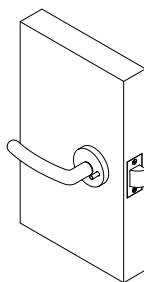
Other finishes are available on request.

Available functions

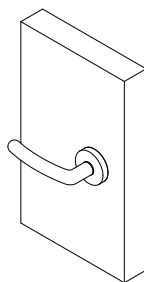
Passage
PGE



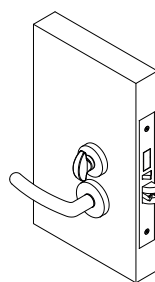
Privacy
PCY



Dummy
DMY R/L Single



Mortise lock
ML-F Entry



ML - Mortise lock functions

- ML-E = Office
- ML-ELECT = Electrified
- ML-EW = Storeroom
- ML-F = Entrance
- ML-FD = Apartment Entry
- ML-FW = Dormitory
- ML-H = Hotel
- ML-J = Classroom
- ML-LF = Privacy
- ML-LFC = Privacy Communicating
- ML-N = Passage
- ML-NC = Passage Communicating

To specify this Valli product, use the information in the same order below.

Example:

1. Lever/Knob
H 356

2. Trim options
RP

3. Function
ML-XX

4. Handing
RH

5. Finish
15

6. Backset
2.3/4"

7. Door thickness
1.3/4" thick

8. Miscellaneous
XXXXX

Please contact sales.us@vallihandles.com for details.

Valli&Valli (USA) Inc.
Headquarters / Showroom
22 West 21st Street, 6th Floor
New York, NY 10010

T (212) 326 8811
(877) 326 2565 (Toll Free)
E sales.us@vallihandles.com
W vallihandles.com

Warehouse
100 Commerce Way, Suite 2
Hackensack, NJ 07601
T (973) 249 0135